

AN ORDINANCE providing for the location, adoption and establishing of the alignment widths and grades for sections of Ash Street and Tin Alley in the Borough of Alburdis; comprising those streets as located on a plan entitled "Alignment and Grade Plan, Sections of Ash Street - Walnut Street to Tin Alley, Tin Alley - Second Street to Front Street," prepared by A. L. Wiesenberger Associates, Inc., Consulting Engineers, Allentown, Pennsylvania, which plan is adopted hereto and made a part of this Ordinance.

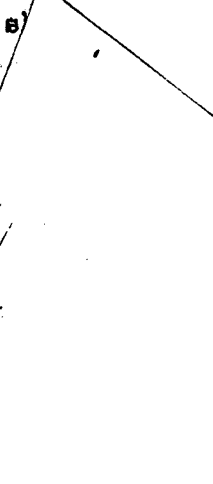
BE IT ORDAINED AND ENACTED by the Authority vested in the Borough Council of the Borough of Alburdis, County of Lehigh and State of Pennsylvania, and it is hereby Ordained and Enacted by the authority of same that:

SECTION I: The public thoroughfare known as Ash Street, from its intersection with Walnut Street southwestwardly to its intersection with Tin Alley, a distance of approximately 269.93 feet, be located adopted and the alignment, widths and grades for same be established as they are indicated and described on the aforementioned plan, the centerline of which shall be described as follows:

Beginning at a point located in the centerline of Walnut Street, said point being distant South 14° 43' East 206.96 feet from the intersection of the centerline of said Walnut Street with the centerline of Front Street; thence South 88° 30' West 269.93 feet to a point in the centerline of Tin Alley, the place of ending. Being of a total width of 16.00 feet throughout.

SECTION II: The public thoroughfare known as Tin Alley from its intersection with Second Street northwestwardly to its intersection with Front Street, a distance of approximately 410.47 feet, be located, adopted, and the alignment, widths and grades for same be established as they are indicated and described on the aforementioned plan, the centerline of which

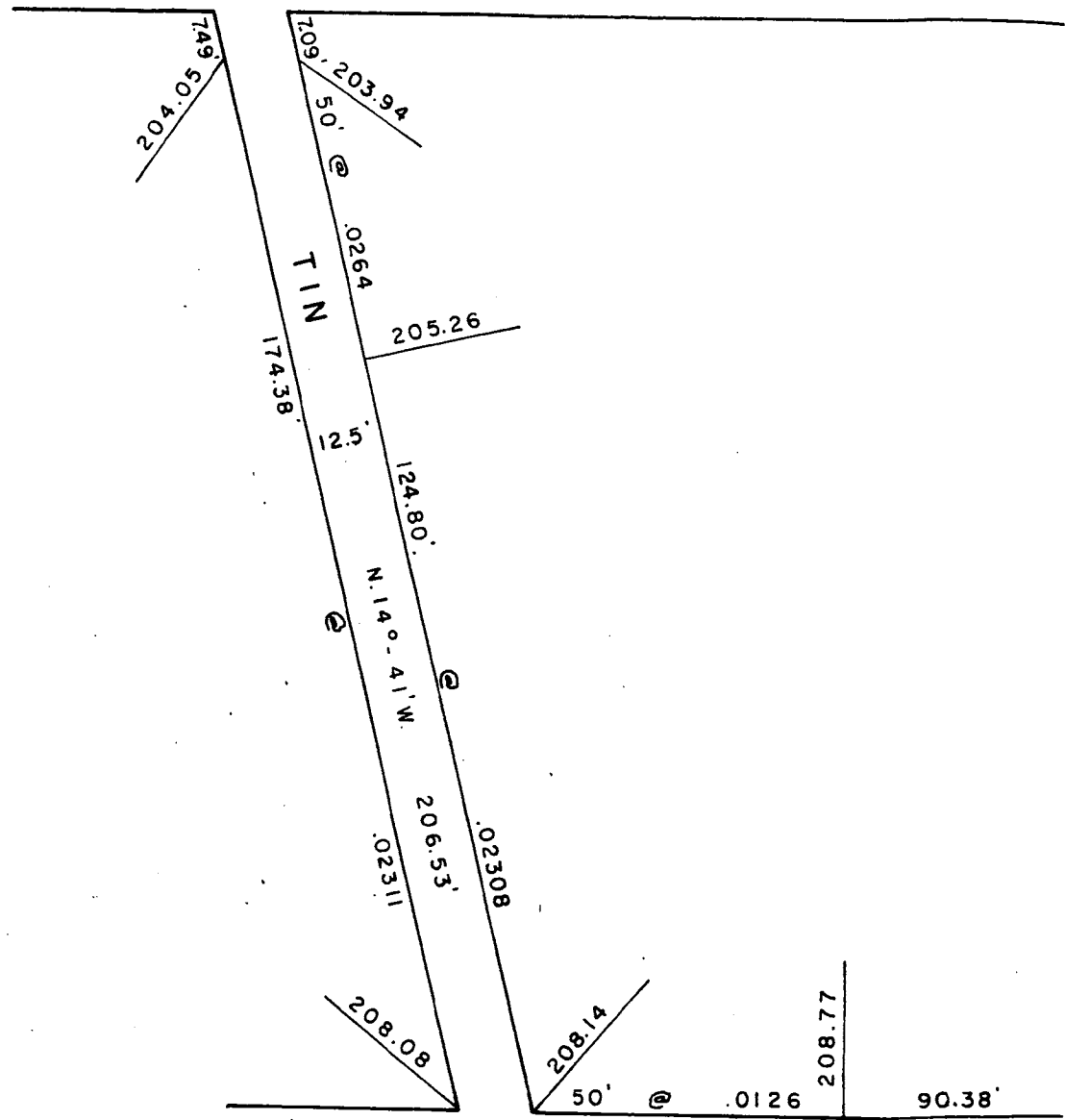
---



FRONT

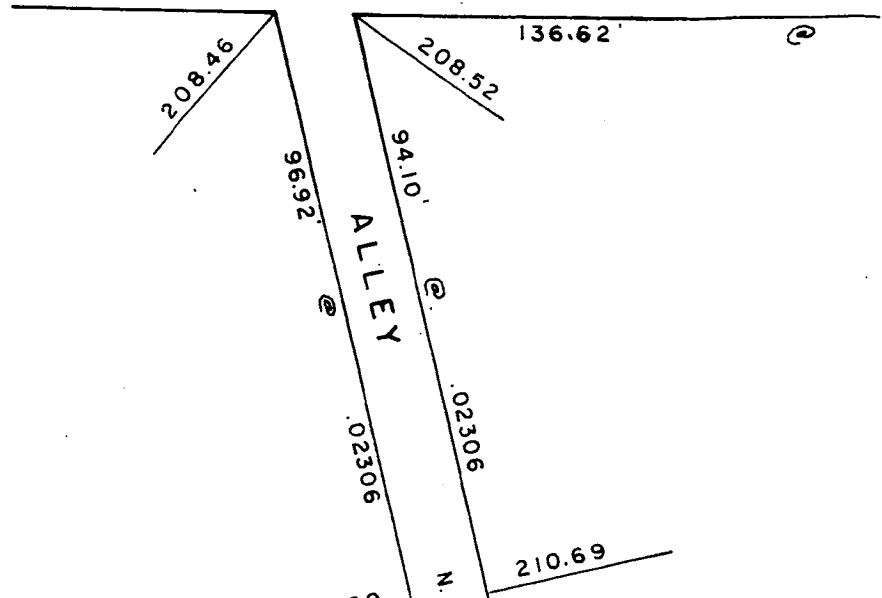
32

N. 88° - 25' E.



ASH

91



E. 269.72'

STREET

O

WALNUT

29'

S. 14°-43' E.

206.96'

209.59

.00907

75'

.006

209.14

208.63

33.23 @ .0535

16'

S. 88°-30' W.

269.93'

STREET

O

.00783

209.59

111.99'

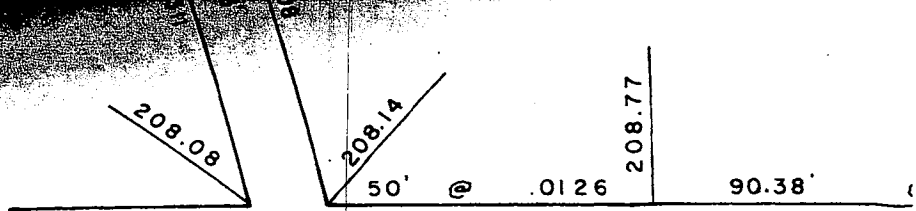
@

.066

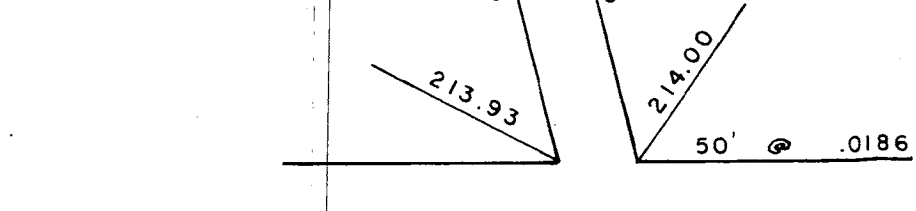
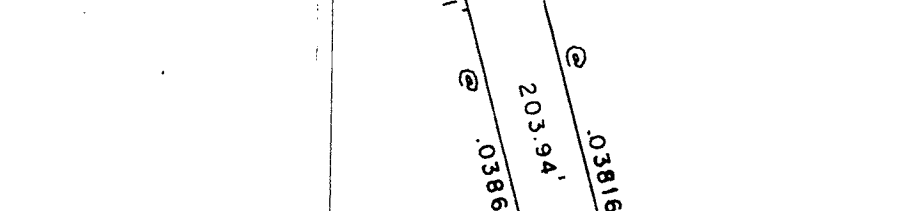
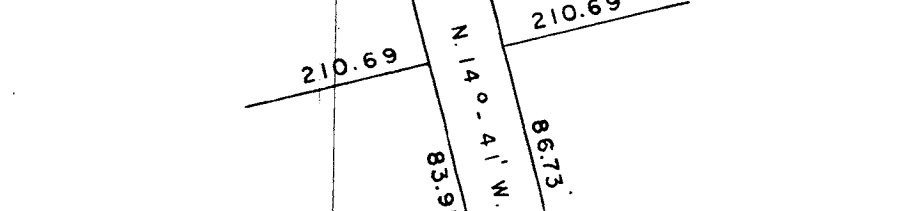
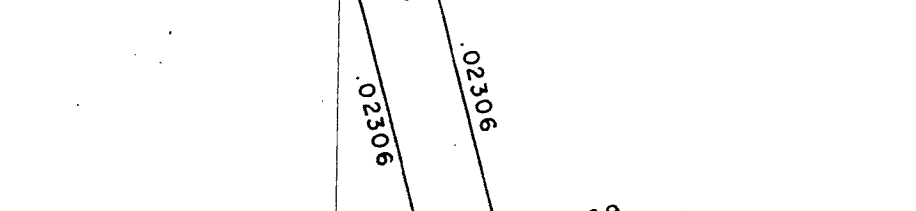
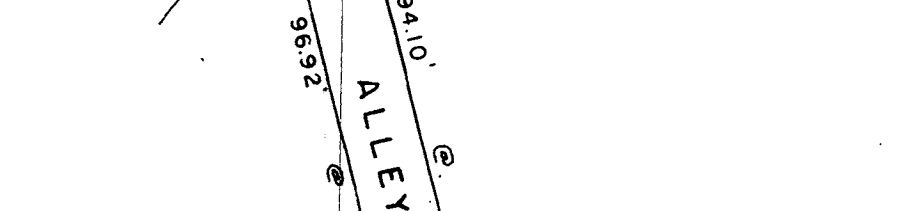
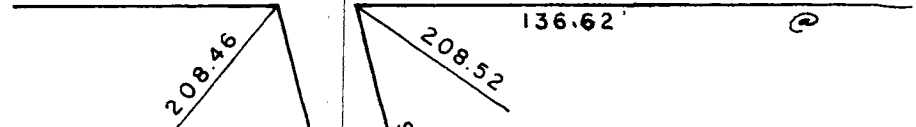
208.92

STREET

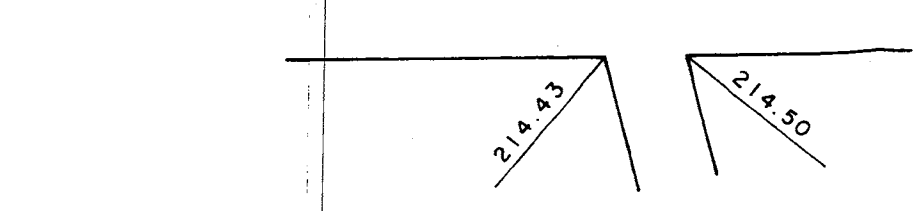
S.

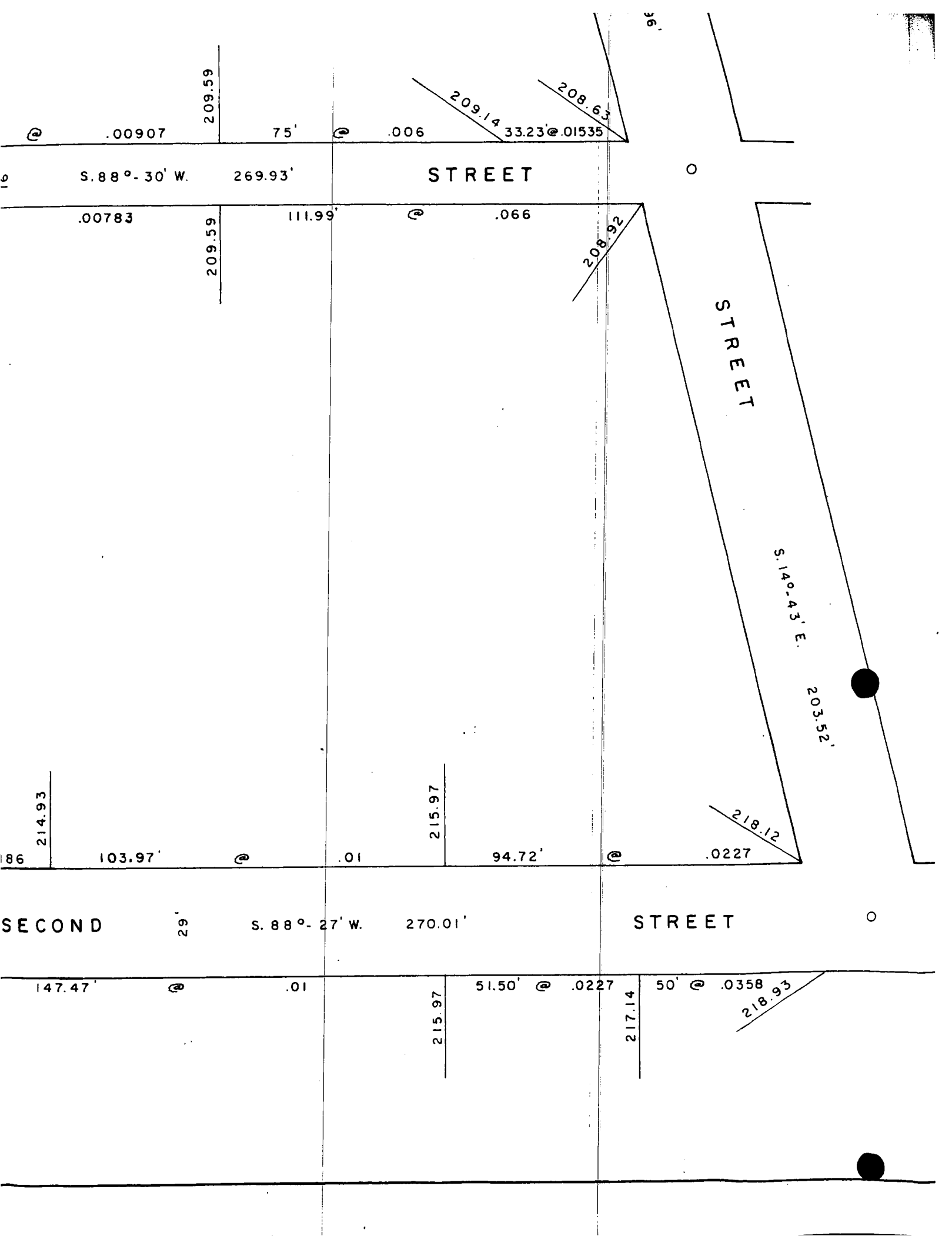


O  
ASH '91



O  
SE





209.59

.00907

75'

.006

209.14

208.63

33.23 @ .01535

S. 88° - 30' W.

269.93'

STREET

.00783

209.59

111.99'

.066

208.92

STREET

S. 14° - 43' E.

203.52'

214.93

103.97'

215.97

94.72'

218.12

.0227

SECOND

29'

S. 88° - 27' W.

270.01'

STREET

147.47'

.01

215.97

51.50' @ .0227

50'

@ .0358

218.93

217.14

63  
35

-08.92

STREET

S. 14°-43' E.

203.52'

B. M.

TOP OF FIRE HYDRANT  
SECOND AND WALNUT STS.  
ELEV. 221.11

218.12

.0227

STREET

227 50' @ .0358

218.93

217.14

ALIGNMENT AND GRADE PLAN

SECTIONS OF  
ASH STREET

WALNUT ST. TO TIN ALLEY

TIN ALLEY

SECOND ST. TO FRONT ST.

ALBERTS