

ORDINANCE NO. 89

Providing for the location, adoption, and establishing of the alignment, widths and grades for that section of Walnut Street which extends from Second Street southeastwardly to Third Street, all as herein indicated and described.

BE IT ORDAINED AND ENACTED by the authority vested in the Borough Council of the Borough of Alburdis, County of Lehigh, State of Pennsylvania, and it is hereby ORDAINED AND ENACTED by the authority of same that:

SECTION I: The public thoroughfare known as Walnut Street from its intersection with Second Street southeastwardly to its intersection with Third Street, a distance of 659.13 feet, be located, adopted and the alignment, widths and grades for same be established as they are indicated and described on a plan titled "Alignment and Grade Plan - Section of Walnut Street, Front Street to Third Street, Alburdis Lehigh County, Pennsylvania," prepared by A. L. Wiesenberger Associate attached hereto and made a part of this Ordinance, the centerline of which shall be described as follows:

Beginning at a point being the intersection of the centerline of Walnut Street with the centerline of Second Street; thence along said centerline of Walnut Street, South $14^{\circ} - 43'$ East 659.13 feet to its point of intersection with the centerline of Third Street the point or place of ending.

SECTION II: This thoroughfare shall be of a total width of 29.00 feet throughout.

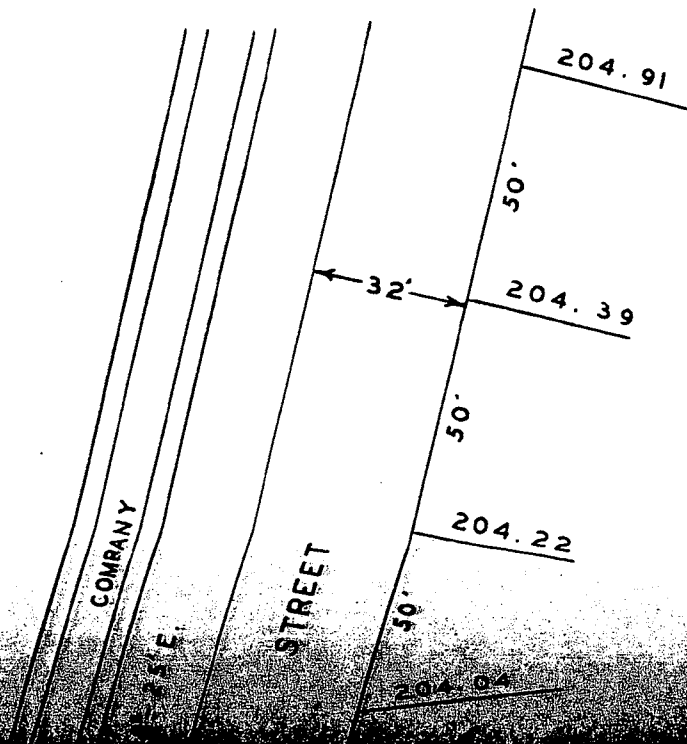
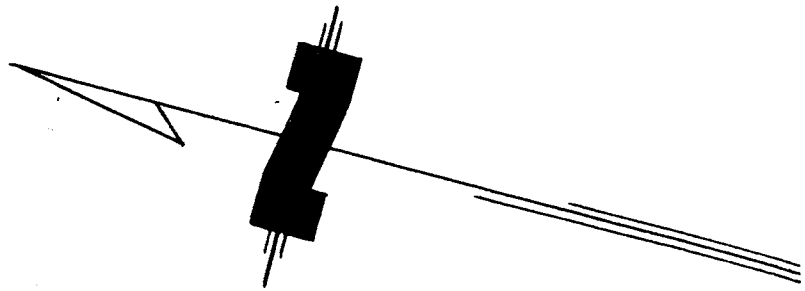
ORDAINED AND ENACTED into an Ordinance at Alburdis, Pennsylvania,

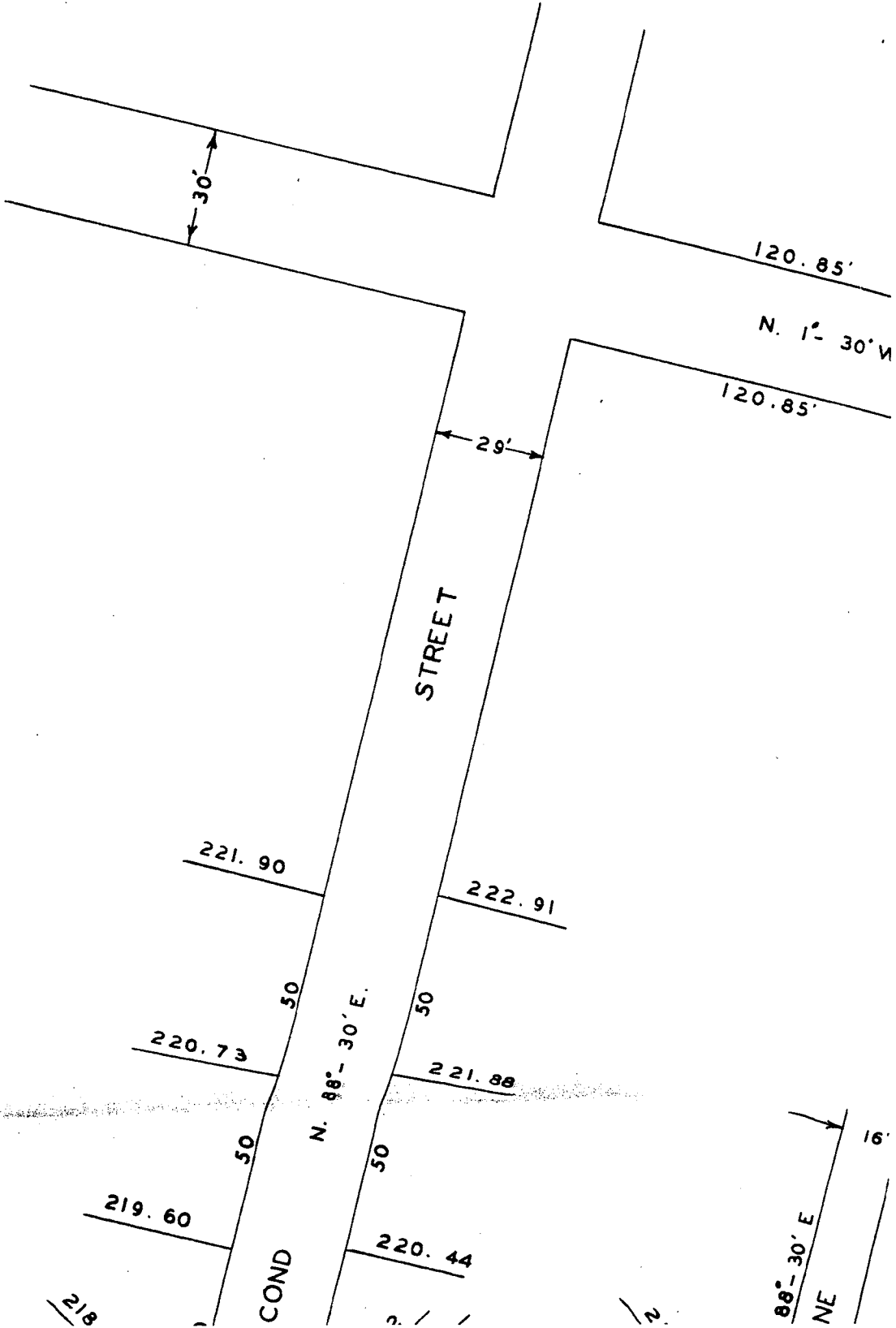
this 5th day of July A.D., 1960.

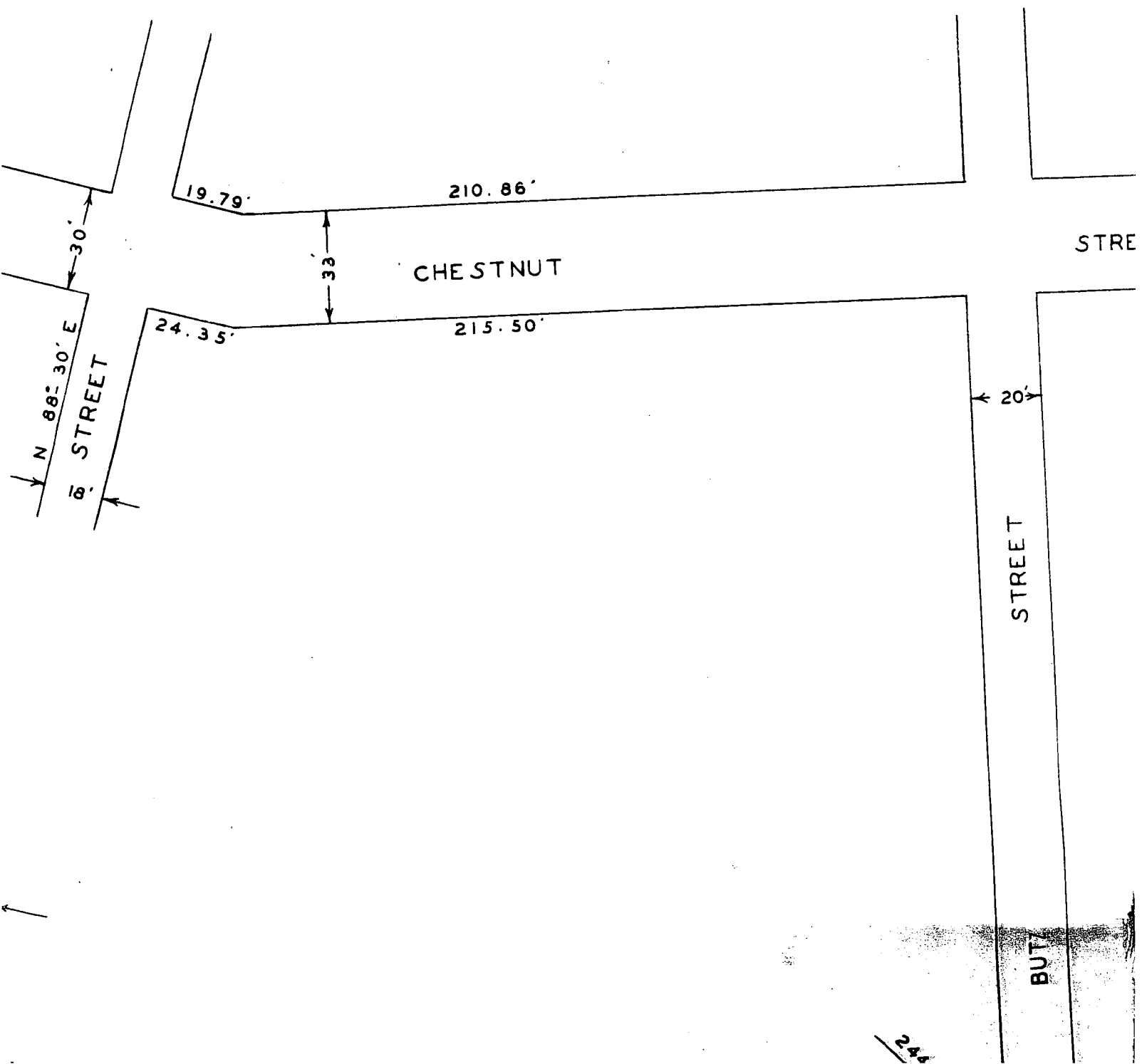
George K. Scherut Pres.
President

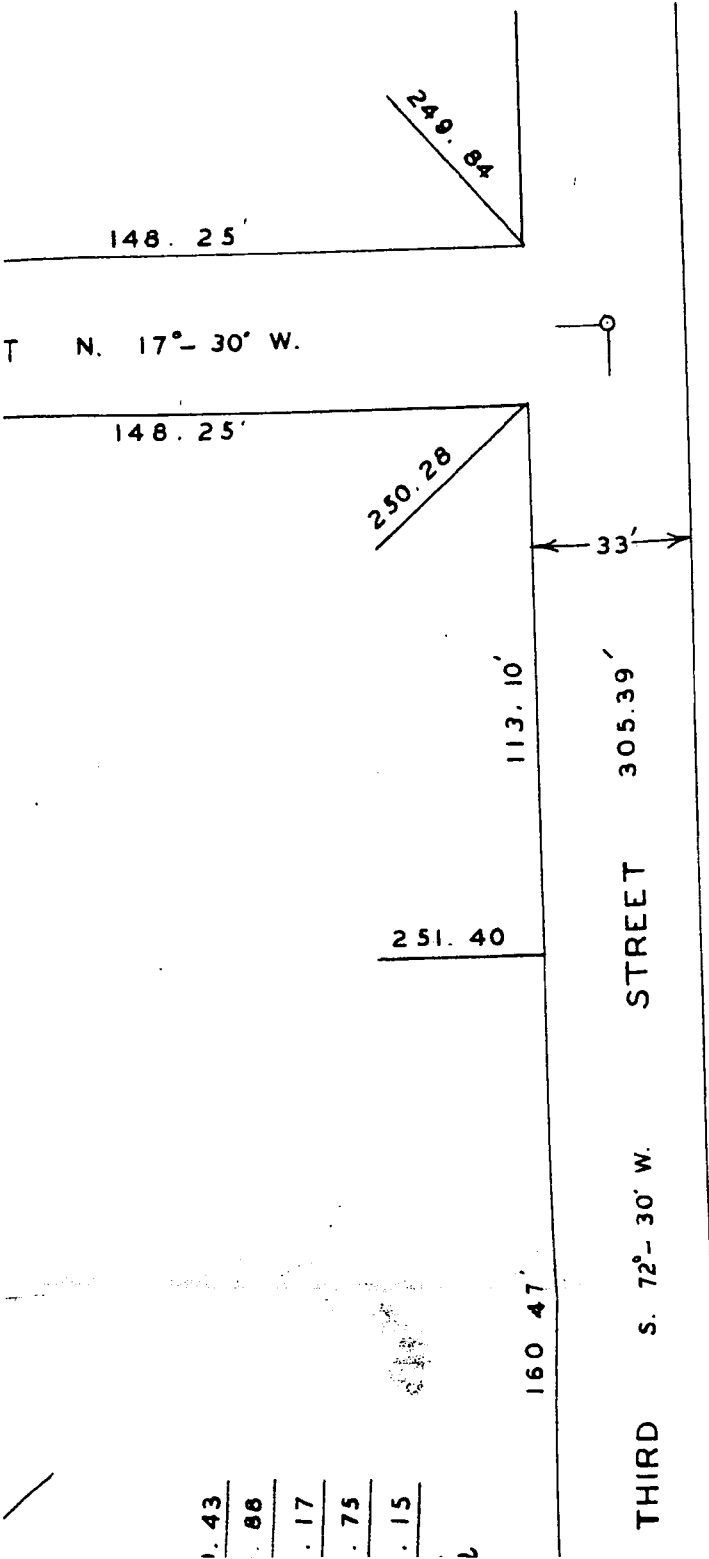
Joyce Schadler
Secretary

Richard Borg
Burgess



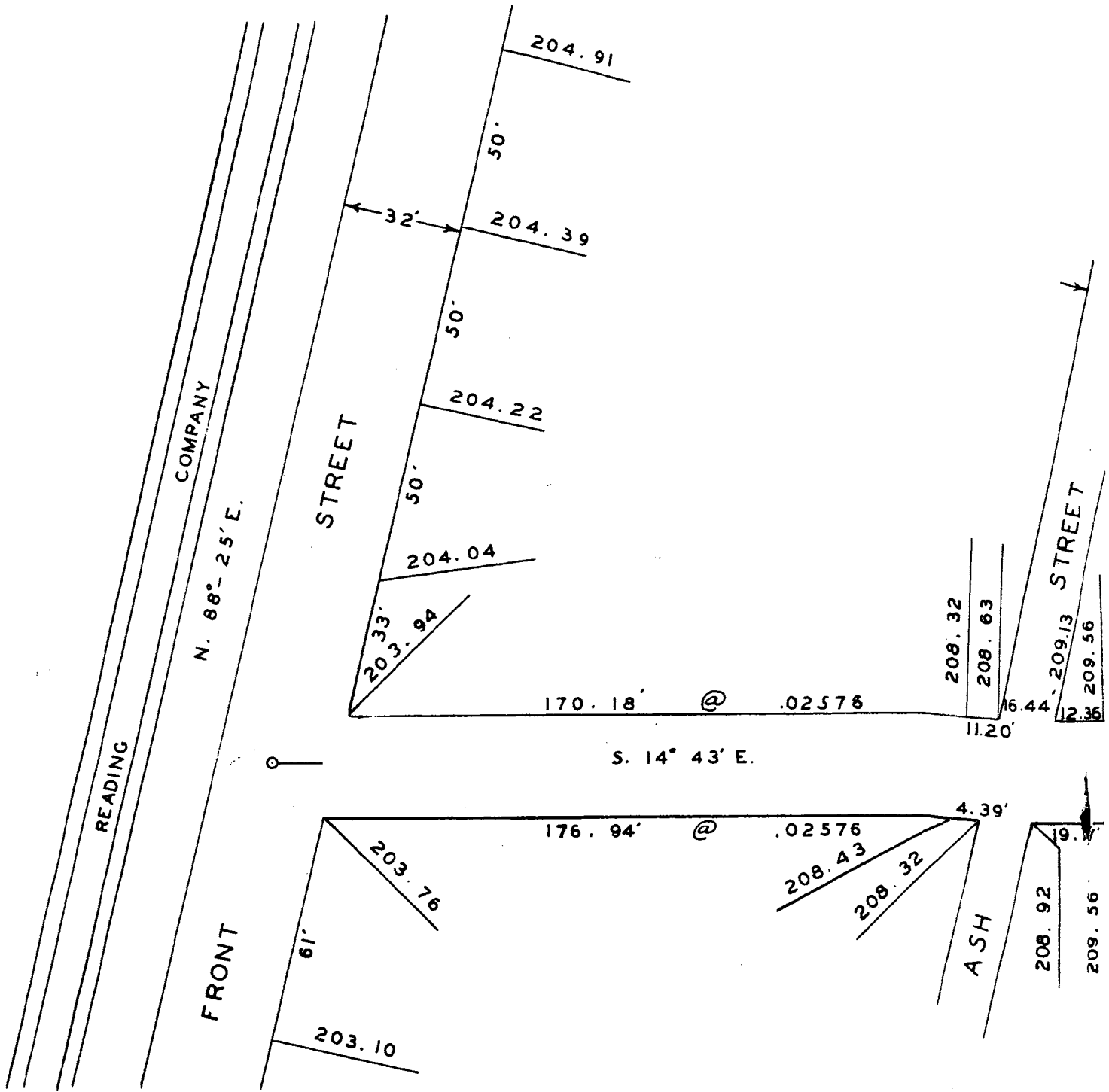


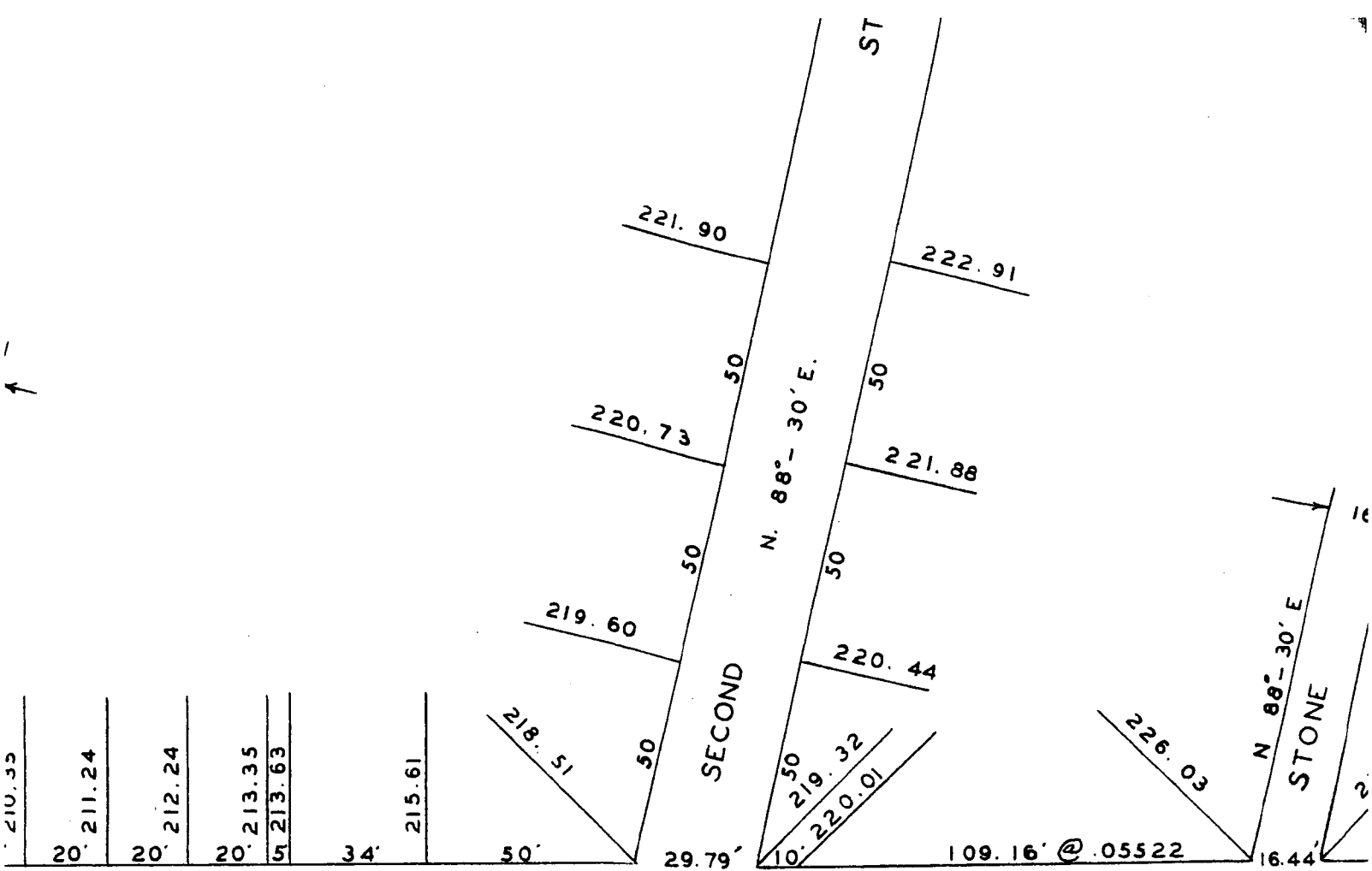




1.43
 88
 .17
 .75
 .15

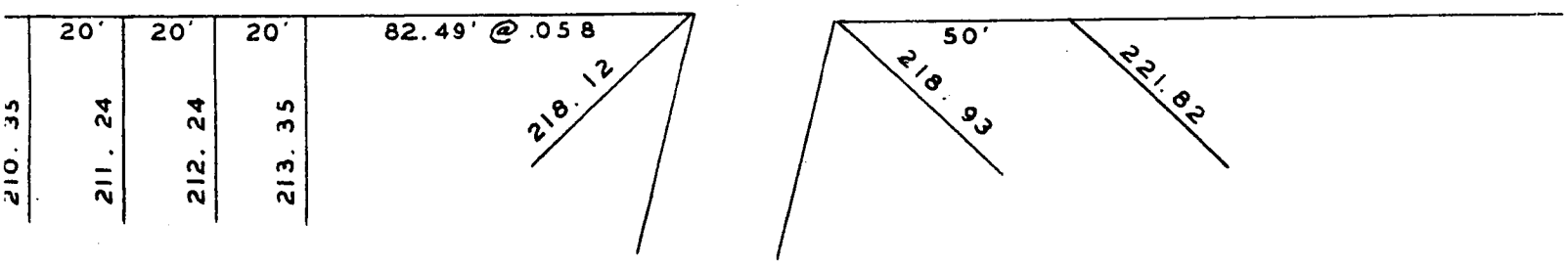
15
 49
 92
 42
 01





410.48'

WALNUT



B. M.

TOP OF F.H.
SECOND AND WALNUT STS
ELEV. 221.11

STREET

BUTZ

244.57

245

319.55'

@

.05522

20.02'

S 14° 43' E

659.13'

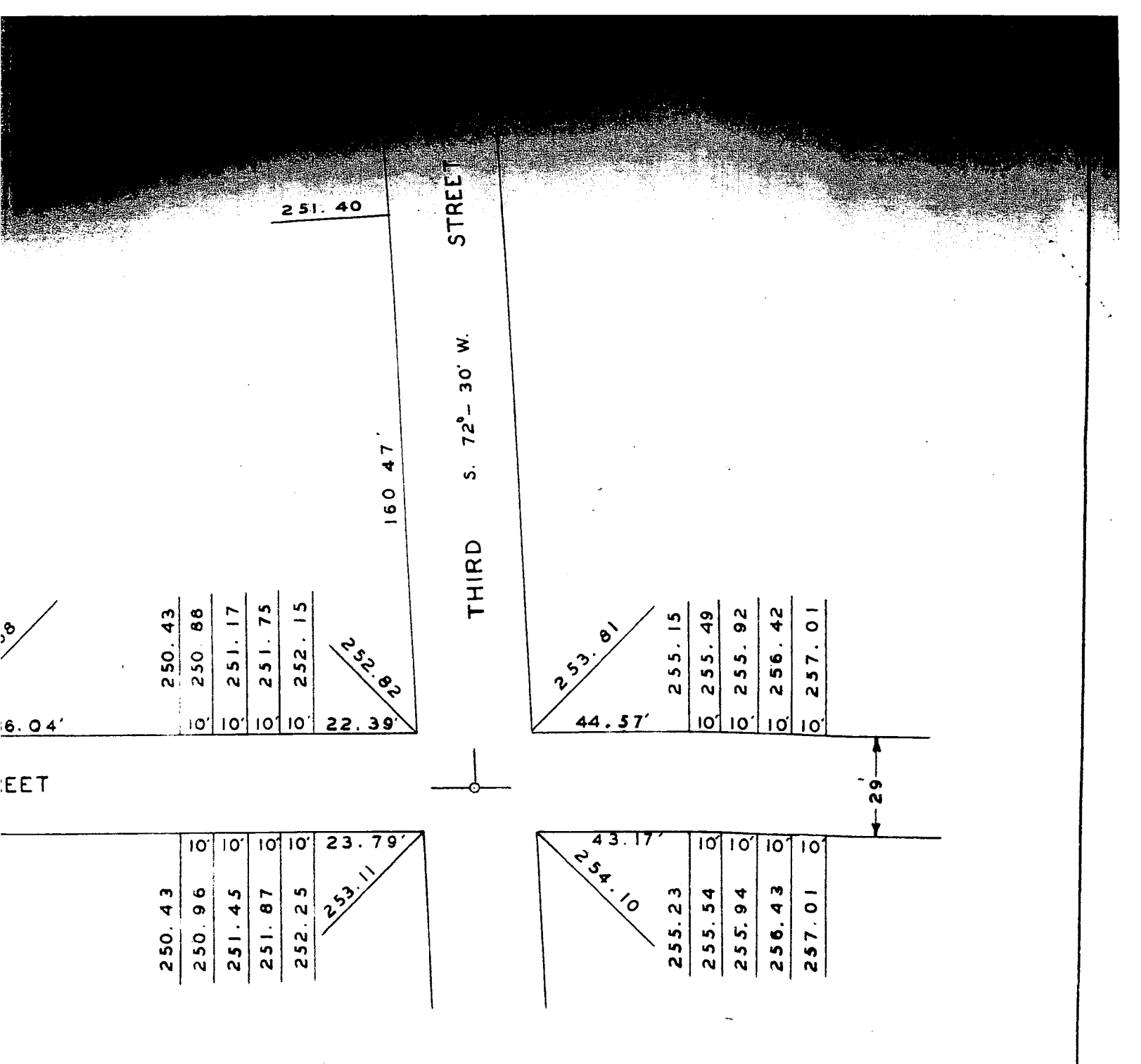
ST

518.03'

@

.05522

TOI
THIRI



B.M.
 OF F.H.
 AND WALNUT STS
 LEV 254.09

ALIGNMENT & GRADE PLAN		
SECTION OF WALNUT STREET FRONT ST. TO THIRD ST. ALBURTIS LEHIGH COUNTY PENNSYLVANIA		
SCALE 1" = 40'	A. L. WIESENBERGER ASSOCIATES CONSULTING ENGINEERS ALLENTOWN PA.	JOB NO M 2360
DATE 10-18-57		